

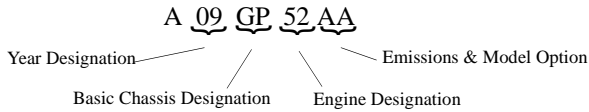
GENERAL INFORMATION

VEHICLE IDENTIFICATION

Model Identification

The machine model number must be used with any correspondence regarding warranty or service.

Machine Model Number Identification

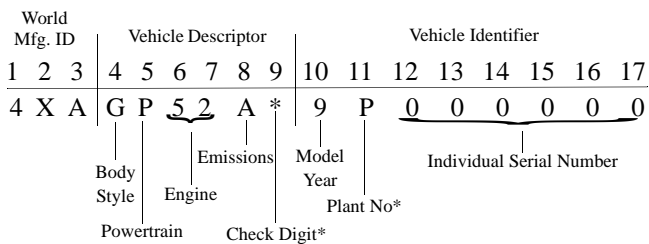


Engine Designation Numbers

ES045KLE013 - Single Cylinder, Liquid Cooled, SOHC 4-Stroke, Electric Start, 5-Speed Manual.

ES051KLE015,16 - Single Cylinder, Liquid Cooled, SOHC 4-Stroke, Electric Start, 5-Speed Manual.

VIN Identification



* This could be either a number or a letter

Vehicle Identification Number (VIN) Location

Whenever corresponding with Polaris about a particular issue, the machine model number and serial number (VIN) are important for vehicle identification. The serial number (VIN) is stamped on the left side of the frame tube (1).



Engine Serial Number Location

The engine serial number is stamped into the casing on the lower left side of the crankcase (2).



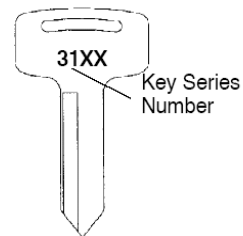
VEHICLE INFORMATION

Paint Codes

PAINTED PART	COLOR	NUMBER
Frame	Matte Black	P-458

Replacement Keys

Replacement keys can be made from the original key. To identify which series the key is, take the first two digits on the original key and refer to the chart to the right for the proper part number. Should both keys become lost, replacement of the ignition switch assembly is necessary.



SERIES #	PART NUMBER
20	4010278
21	4010278
22	4010321
23	4010321
27	4010321
28	4010321
31	4110141
32	4110148
67	4010278
68	4010278